



# NORMAL EDITIONS WORKSHOP

Richard Finch, Director and Professor of Art

Veda Rives, Assistant Director

Center for the Visual Arts Box 5620 Illinois State University Normal, IL 61790-5620 Ph.309-438-7530

FALL 1996

NUMBER 5

## 1996 Publications



**"Hope"** by **Michael Dubina**, a four-color lithograph with hand coloring by the artist, was published in February. This landscape measures 14" by 11" and was printed on Arches Cover white paper. The edition of 20 was printed by Veda Rives with assistance from Dennis Applebee, Eva Belmonte, Ian Butterfield, Richard Finch, Meda Rives and Feng Xie.



**"Quiz"**, a black and white intaglio by **John Himmelfarb** was released in June. The abstracted figurative image measures 4 7/8" by 3 7/8" and was printed on Arches Cover white paper with Kitakata as a chine-colle paper. The edition of 20 was printed by Dennis Applebee with assistance from Eva Belmonte, Ian Butterfield, Richard Finch, Meda Rives, Veda Rives, and Feng Xie.

A seven-color lithograph by **Michael Dubina** entitled **"Centered on Hope"** was released in July. The atmospheric landscape was printed on Arches Cover buff paper and measures 25" by 22 1/8". The edition of 12 was printed by Richard Finch and Veda Rives with assistance from Dennis Applebee, Eva

Belmonte, Ian Butterfield, Meda Rives and Feng Xie.

## Recent Contract Projects

**"Female Voice-Male"**, a one-color lithograph completed in May, was printed according to a contract with the artist, **John Himmelfarb**. The calligraphic image which measures 22 1/4" by 13 3/4" was printed in black on BFK Rives gray paper. The edition of 40 was printed by Veda Rives with assistance from Dennis Applebee, Eva Belmonte, Ian Butterfield, Richard Finch, Meda Rives and Feng Xie.

## Grant Award

We are very pleased to report that the **Illinois Arts Council** has awarded a grant to Normal Editions Workshop in support of our project **"Julia Fish: A Short-Term Artist Residency to Extend Normal Editions Workshop's Twenty Years of Collaboration with and Support of Illinois Artists"**. Julia Fish is an established Chicago artist who will be scheduled for a one-week visiting artist residency during the 1997 spring semester. Activities will include a public lecture regarding her work, artistic insights, current endeavors, and recent achievements; and public presentations with demonstrations of her working methods. In addition to the public lecture and presentations, Ms. Fish will collaborate with the Normal Editions Workshop staff during her stay to produce a limited edition print(s). The schedule of events is still tentative at this time.

## Looking Ahead: New Projects

Current projects in progress include a seven-color print by **John Himmelfarb**, which includes a variety of printing elements (a wood engraving, five aluminum litho plates and one litho stone). The multi-layered image utilizes the artist's calligraphic style in a 30" by

22" format. Mr. Himmelfarb also is working on several intaglio plates utilizing a variety of techniques, including sugar-lift and aquatint.

Another project still in progress is a color still-life by James Butler. The 28" by 38" image will utilize a number of aluminum litho plates and one litho stone in this meticulously rendered image.

Robert Stackhouse has just begun a project which utilizes three large litho stones and xerox toner washes for an image of his most recent on-site sculpture in Bloomington, Illinois.

## Exhibition Notices & Report

"The Modern Print" is an exhibition organized by Ann Pagel of Haydon Gallery in Lincoln, Nebraska. The show includes recent works by well known artists from across the United States utilizing a variety of printmaking media. The exhibition will be shown at Hastings College, Hastings, Nebraska in October and subsequently at Haydon Gallery in November 1996. Normal Editions Workshop is well represented in this exhibition of 46 works; seven of the images are N.E.W. publications. These images include James Butler's "Still Life with Glass and Clay", Alex Grey's "Study for Transfiguration" and "Ecstasy", John Himmelfarb's "Proof Copy" and "Female Voice-Male", Dennis Oppenheim's "Occasion for Expansion" and Buzz Spector's "Dutch Mills". Richard Finch also has work included in this national invitational exhibition.

Southern Illinois University in Edwardsville will host an exhibition in January of 1997. "The Intimate Print" is an exhibition of selected works from N.E.W.'s archives which presents works created over the history of the workshop. This exhibition is organized under the parameters of limiting the maximum image size to 18" by 24" in order to highlight the effectiveness of the more

intimate viewing atmosphere inherent to smaller-scale images. While limited in physical size, this exhibition of over forty images is representative of the rich variety in contemporary printmaking.

### Open Invitation

A cordial invitation is extended to Illinois State University students, faculty and staff to stop by our facilities. We welcome the opportunity to share our activities with those interested in observing the interaction of visiting artist and printer, as well as the progress of these editions. This workshop provides a unique working environment for printmaking students and our staff. Projects throughout the year provide opportunities to observe and understand new techniques and aspects of printmaking. In keeping with the philosophy and practices of N.E.W., attention to and assistance in the collaborative and production aspects of the projects by interested faculty and students is encouraged and utilized. **Project proposals are welcome.** We encourage interested persons to submit project proposals in writing for consideration as future projects. Also available: contract printing rates for limited edition prints and daily rates for monotype print sessions.

### Exhibitions Available

The three traveling exhibitions offered by N.E.W. showcase selected prints from N.E.W.'s archives, and represent our ongoing commitment to the production of visual images in collaboration with visiting artists.

The focus of Normal Editions Workshop is to encourage a creative dialogue between artists, students, faculty, and the public by providing an exchange of ideas through the visual images that are produced by our collaborative custom printing services. Artists of regional, national and international reputation visit Illinois State University and work with our staff to collaboratively produce original limited editions. Many of these artists have little or no prior experience with printmaking media. Our staff provides the technical expertise to ensure the success of the printmaking processes, thus freeing the artists to create and experiment with their ideas and images. The selected prints presented in these exhibitions were created by a wide variety of

artists with equally diverse imagery. With each project, the artists have the opportunity to expand their knowledge and enhance their creative expression through the exploration of printmaking media. The majority of the editions are lithographs, either black and white or multi-color, while several utilize or combine other techniques such as intaglio, collograph and chine-colle.

Three exhibitions of prints published by N.E.W. currently are available. The **"N.E.W. Traveling Exhibition"** features over fifty prints, documenting all of the major editions published by N.E.W. over the past twenty years.

**"The Intimate Print"** features forty prints uniformly mounted on 18" by 24" mat boards under plexi. Rental fee is \$500.00, plus insurance fees and one-way shipping charges. The rental fee, paid by the hosting institution, may be applied to the purchase of impressions from the editions featured in the exhibitions.

**"Contemporary Prints"** is an exhibition of the prints co-published by Normal Editions Workshop and University Galleries since 1988. This traveling exhibition was partially funded by a grant from the Illinois Arts Council to provide Illinois museums, art centers, and other university galleries with the opportunity to view the results of years of collaboration with contemporary artists. This exhibition has been hosted by several institutions in the past two years including, Parkland College, Champaign; Johnson State College, Johnson, Vermont; Bicentennial Art Center, Paris; Southern Illinois University, Carbondale. The Illinois State Museum, Lockport Gallery is scheduled for November 12, 1996 to January 16, 1997. Lakeview Museum, Peoria is tentatively scheduled for the spring of 1997. Other venues and out-of-state sites, are still being considered.

### New to N.E.W.

We are very pleased to report that N.E.W. has received an update in computer hardware. Our very old friend has been replaced by a Macintosh Performa 6214CD with color monitor. It is networked and we have been learning the surfing techniques for the world wide web. Our appreciation to the Office of Research and Technology (ORAT) lab staff for your assistance in this transition: Dave Kuntz for the installation of the

hardware, and to David Williams who coordinated over 100 station upgrades and redistributions of equipment throughout the College of Fine Arts.

After a week-long summer session class on html language and designing homepages in the ORAT computer lab, Richard Finch and Veda Rives had the start of www homepages for themselves and N.E.W. It has been quite an experience learning about all the possibilities and trying to apply several to our page. The site will be updated periodically. <http://www.orat.ilstu.edu/homepages/rfinch/>

### Local Exhibition

The McLean County Arts Center's Holiday Treasures 1996 features a variety of artwork by area artists including six prints published by N.E.W. These prints are "Hope" and "Centered on Hope" by Michael Dubina, "Temptation" by Mark Forth, "Study for Farmer Fiddling with Fawns" by David Hodges, "Study for Transfiguration" by Alex Grey and "Still Life with Glass and Clay" by James Butler. The show runs from Nov. 14 to Dec. 23rd. McLean County Arts Center is located at 601 N. East, Bloomington, Illinois. Phone: (309) 829 - 0011

### Printmakers Exhibition and Sale

ISU's 12th Annual Printmaker's Exhibition and Sale is Dec. 6th from 8am-8pm in room 127 in the Center for the Visual Arts building. Original artworks by students, faculty, staff and visiting artists are featured. A **Silent Auction** of **"Still Life with Glass and Clay"** by **James Butler** will be held. The minimum bid is \$200.00. Written bids may be submitted anytime during the sale or mailed to Richard Finch. A **raffle** of **"Hen"** by **Chuck Forsman** will be held. Tickets are available for \$3.00 in the Art Dept. office, Rm 129A and from printmaking students. All proceeds will be used to support the ISU printmaking program. Both winners will be announced at 8 p.m.

### Guest Artist's Activities

**Robert Stackhouse**, an internationally acclaimed sculptor, painter and printmaker who lives and works in SoHo, New York City, spent most of October at Bloomington-Normal's two universities, creating art and delivering public lectures at IWU and ISU. Illinois Wesleyan

University hosted the artist early in October for an on-site sculpture project and exhibition of prints, paintings, and sculpture. One of the works included in the exhibition is "**Brooklyn Bridge**", a print from the edition which Robert Stackhouse created during his previous visit to Normal Editions Workshop in 1983. Illinois State University hosted the artist from October 17 to 23, with the emphasis on the collaborative process in creating limited edition prints at Normal Editions Workshop.

**John Himmelfarb**, a well-known Chicago artist whose works are included in many prestigious public and private collections, worked as a visiting artist at Normal Editions Workshop for a few days in March and again for a day in September. Mr. Himmelfarb drew images on several printing elements and followed up with some additions to one of the images.

**James Juszczyk**, a visiting artist from New York, came this spring to N.E.W. from the Art Department's seminar class. He utilized Lascaux acrylic printing bases (formulated for screen printing) in monotype techniques. The research was interesting and proved to have mixed results, but with some positive indications. These methods might be of interest to those individuals who are limited to use of acrylic based media due to health restrictions.

**John Ford**, a visiting artist from Wisconsin, also came to N.E.W. through the seminar class. John worked with several intaglio techniques for his editions with Professor Ray George.

#### **Selected Activities of N.E.W. Staff**

**Meda Rives'** handmade paper piece entitled "Another Season" was selected for "Paper/Fiber XIX", a national competition for fiber arts. The exhibition was hosted by Iowa City Arts in Iowa City, Iowa in April. You may visit this exhibit through their web site address: <http://arts.giant.net/pf96/>

A monotype entitled "Going Home" by **Veda Rives** was selected for the "Liturgical and Sacred Art Exhibition", a competition open to artists in all media in an eight-state region, in May and June. The exhibit was hosted by the Springfield Arts Council at the Edward's Place Gallery in Springfield, Illinois.

A selected list from **Richard**

**Finch's** recent activities includes works in the following exhibitions: "Twentieth Harper College National Print and Drawing Exhibition" at Harper College, Palatine, Illinois; "Second Great Plains National Art Exhibition" at Moss-Thorns Gallery of Art, Fort Hayes State University, Hayes, Kansas--Purchase Award; "Nineteenth Annual Art on Paper" sponsored by the Maryland Federation of Art, at the MFA Gallery on the Circle, Annapolis, Maryland; and "1996 Mid America Print Council Members Juried Exhibition" at Rockford College Art Gallery in Rockford, Illinois. Richard Finch was also a visiting faculty in drawing at the Southern Illinois Art Workshop, Inc. in Pinckneyville, Illinois from October 10-12.

#### **Student Workers Highlighted**

Congratulations to **Dennis Applebee** and **Eva Belmonte** upon their graduation from Illinois State University in May. Along with their other achievements, both Eva and Dennis have been loyal and able student workers in the Special Projects class at Normal Editions Workshop. Eva earned a Bachelor of Arts degree with a concentration in Art and is currently in Chicago. Dennis earned a Bachelor of Fine Arts degree with a concentration in Printmaking. His BFA Exhibition was held in May. Dennis is now enrolled in the graduate program at Ohio State in Columbus, Ohio.

**Feng Xie** is working on a graduate degree in Art Education. **Meda Rives** is working on a MFA degree in Fibers.

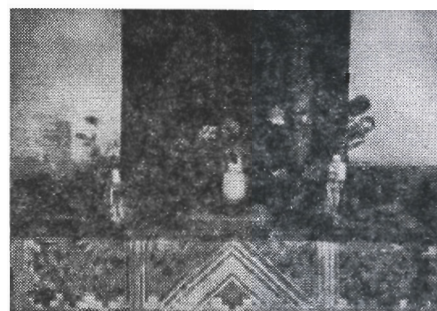
**Ian Butterfield** and **Keith Domescik** are in the BFA program with concentrations in Printmaking. Ian Butterfield's BFA exhibition of recent work will be presented in April. Keith Domescik's BFA Exhibition, entitled "Homage to Man The Machine" opens December 3rd with a reception at 7:00 pm and runs through December 10th in Gallery II of University Galleries, Illinois State University.



#### **Normal Editions Workshop Newsletter**

Published irregularly by  
Normal Editions Workshop  
Illinois State University  
Campus Box 5620  
Normal IL 61790-5620

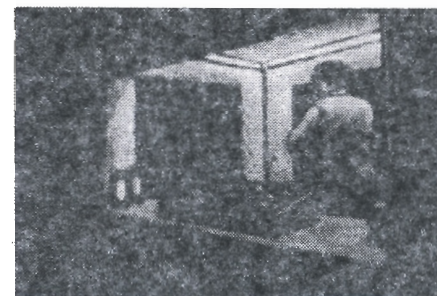
#### **A Selected List of Currently Available Impressions**



#### Still Life With Glass and Clay

**James D. Butler**

Black and White Lithograph \$400.00



#### Donuts

**Jane Dickson**

Three Color Litho & collograph \$600.00



#### The Stripper

**Jane Dickson**

Six Color Lithograph \$600.00



#### World Piece (Between the Lines)

**Dann Nardi**

Hand-built Paper \$450.00



# Normal Editions Workshop

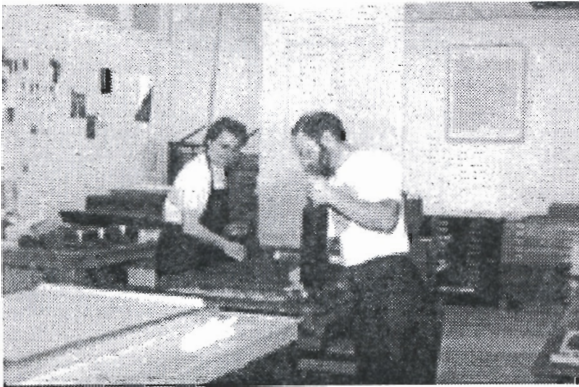
**Professor Richard Finch, Director**

**Veda Rives, Assistant Director**

Center for the Visual Arts  
5620 Department of Art  
Illinois State University  
Campus Box 5620  
Normal, IL 61790-5620

NON-PROFIT ORG  
U.S. POSTAGE PAID  
ILLINOIS STATE  
UNIVERSITY

Our e-mail addresses are:  
rdfinch@oratmail.cfa.ilstu.edu  
vrives@oratmail.cfa.ilstu.edu



## N.E.W. Awards

Ian Butterfield was awarded the Normal Editions Workshop 1996-97 Scholarship. Each spring the Art Department's scholarship committee reviews slide portfolios submitted by the art students to select winners for a variety of awards and scholarships. The N.E.W. Scholarship is open to both graduate and undergraduate art students with an emphasis in printmaking and who will be attending ISU in the following academic year.

This year Normal Editions Workshop also sponsored two printmaking awards for the Student Annual Exhibition. Kevin Haynes received the Undergraduate award and Meda Rives received the Graduate award.

In addition to the above awards and scholarship, Normal Editions Workshop also sponsors a graduate assistantship each semester. This past semester, we were able to sponsor two graduate assistantships.

## 1997 Summer Workshop?

Funding is not yet set for ISU's 1997 summer program. Therefore we can not post any definite information about a summer printmaking workshop. However, a show of interest by potential participants would be helpful. If you would be interested in a printmaking workshop in the summer of 1997, let us know your areas of interest and we will certainly do our best to accommodate your needs.

The 1996 Summer Workshop, taught by Professor Richard Finch, featured monotype techniques with access to other lithographic processes. The summer session was a success and offered unique opportunities for a variety of individualized projects including stone and metal plate lithography; monotype printing; printing in black and white and color.

Normal Editions Workshop would like to thank Meda Rives and Veda Rives for their aid in the design of this edition of our newsletter.

ANNOUNCING :

## THE 12TH ANNUAL PRINTMAKER'S EXHIBITION

AND  
SALE

ILLINOIS STATE UNIVERSITY

CENTER FOR THE  
VISUAL ARTS

ROOMS 127 & 129

FRIDAY

DECEMBER 6TH

8A.M.-8P.M.

See related article inside for more details on this unique opportunity.