



NORMAL EDITIONS WORKSHOP

Richard Finch, Director and Professor of Art
Veda Rives, Associate Director

Center for the Visual Arts Box 5620, Illinois State University Normal, IL 61790-5620

PHONE: 309-438-7530

FAX: 309-438-5625

WEB: <http://www.orat.ilstu.edu/~rfinch/>

EMAIL: rdfinch@ilstu.edu & vrives@oratmail.cfa.ilstu.edu

FALL 2001

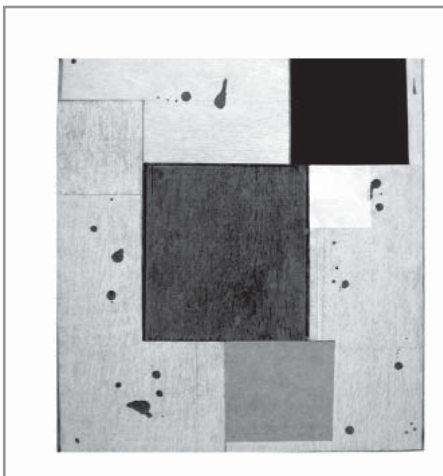
NUMBER 10



four color lithograph with handcoloring by Rosalyn Schwartz

2001 PUBLICATIONS

Rosalyn Schwartz, an established painter from Champaign, Illinois, had a one-week visiting artist residency at Normal Editions Workshop in November, 2000. This program was partially sponsored by a grant from the Illinois Arts Council, an agency of the State of Illinois. Ms. Schwartz collaborated with the N.E.W. staff during her stay to produce three color trial proof (C.T.P.) impressions of multi-colored lithographs. Xerox toner washes on both stone and aluminum printing elements were utilized in creating the images. The first and second CTPs have four color runs while the third CTP carries six color runs. Each of the impressions also includes handcoloring by the artist. These lithographs were hand printed by Veda Rives and Richard Finch, with assistance



untitled intaglio and woodcut with colle by Rodney Carswell

from Tonia Bonnell, Bradley Giacomini, Chris Shepherd, and Meda Rives. The 22 1/2 by 30 inch images are printed on calendered BFK Rives paper. The first CTP, *Magenta Series*, was donated by the artist to a fundraising event for the Krannert Art Museum, University of Illinois, Champaign in April. The other two CTP impressions were exhibited at Ispace in Chicago Sept 7-Oct 6. We would like to take this opportunity to express our appreciation to the Illinois Arts Council for

the support of this project: **Rosalyn Schwartz at Illinois State University's Normal Editions Workshop**. Two of the CTPs have been selected for editioning, which is currently in progress. Prices are available upon request.

Six editions of prints for **Rodney Carswell** were completed recently. The images are sequential compositions utilizing various combinations of intaglio and relief printing elements, colle papers, and color changes. The prints range in complexity from two color runs with a colle element to eight color runs with six colle elements. The intaglio, woodcut, and colle prints were handprinted by Chris Shepherd, Brad Giacomini, and Veda Rives with assistance from Tonia Bonnell, Richard Finch, Betsy Hamilton, Yoko Kawazoe, and Meda Rives. The 25 by 22 1/2 inch images are printed on Arches Cover white paper. The colle elements were printed on Gampi, Fuji, and Lightweight Laid papers. Prices are available upon request. Rodney Carswell, a nationally known painter who lives and works in Chicago, Illinois, had a one-week visiting artist residency at Normal Editions Workshop in April, 2000. This program was partially sponsored by a grant from the Illinois Arts Council, an agency of the State of Illinois.

GRANT AWARD 2001-2002

We are very pleased to report that the **Illinois Arts Council** has awarded a grant supporting **John Himmelfarb at Normal Editions Workshop, Illinois State University**. A painter from Chicago, **John Himmelfarb** is a self-employed artist. His degree is from Harvard University. Awards include: Chicago Artists Abroad, National Endowment for the Arts, Illinois Arts Council Fellowship, Pollock-Krasner Foundation, and Yaddo Fellow. The artist's one-week visiting artist residency at Normal Editions Workshop is scheduled for early February 2002. Activities will include a public lecture on Tuesday, February 5th at 3:30 p.m. in CVA room 149 to community and campus members regarding his work, artistic insights, current endeavors, and recent achievements. In addition, public presentations will be ongoing, with demonstrations of his working methods as he explores the challenging, expressive, and creative potentials of printmaking in collaboration with the professional staff at N.E.W. to produce limited edition prints.

A selected list of John Himmelfarb's recent one-person exhibitions includes: 2001- - University of Fairfield, Fairfield, CT; Center For Contemporary Art, Christ Church, New Zealand; 2000--Mayers, Aebel, & McHale, Paris, France; Jean Albano Gallery, Chicago; Sioux City Art Center, Sioux City, Iowa; Chicago Cultural Center, Chicago, Illinois, 1996.

For more information about John Himmelfarb's artwork, look at his web-site <http://www.johnhimmelfarb.com/home.htm>



Richard Finch, Veda Rives, and Rodney Carswell working in the Intaglio shop.

PRINTMAKERS EXHIBITION AND SALE

The 17th Annual Printmaker's Exhibition and Sale will be held on Friday, December 7th from 8 am-7 pm in rooms 127 and 129 in the Center for the Visual Arts building. All prints are original artworks by ISU students, faculty, staff, and visiting artists.

A **SILENT AUCTION** of the framed



lithograph *Normal Wooded Interior* by **Wayne Kimball** will be held. The 11" x 14" inch image is an eleven color lithograph printed on Rives BFK gray paper. The minimum bid for this framed impression at the silent auction is \$200.00. The retail price of an unframed impression is \$300.00. Written bids may be submitted anytime before or during the sale. All bids must be received by 7 p.m. on Friday, December 7th.

A **RAFFLE** of the print *Niagra* by



Rodney Carswell will be held. The 10" x 13" inch image is a one color lithograph printed in black ink on BFK Rives gray paper. The retail price of this print is \$50.00. **Raffle tickets are only \$1.00 each** and are available in Room 129A. All proceeds will be used to support the ISU printmaking program. Both winners will be announced at the end of the sale at 7 p.m. Participants need not be present to win.

REPORT ON 2000 PRINTSALE

Highlights from the 16th Annual Printmaker's Exhibition and Sale which was held on December 8, 2000 include winners of the raffle and silent auction events. Jeffery Mitchell Sr. won the raffle of the lithograph *Evening*

Landscape by

James D. Butler. Martin DeWitt, Director of the Tweed Museum of Art at the University of Minnesota at Duluth, won the bid for the silent auction of the lithograph *Boy with Raised Arm* by **Sidney Goodman.**

The event was well attended by both campus and community members. The Printmaking Area would like to express appreciation to all who helped to make it a success.



Feb. 2001: Working on aluminum plates with toner and washes: Chris Shepherd, graduate assistant; Rosalyn Schwartz, visiting artist; & Brad Giacomini, student worker.

PRINT EXHIBITIONS AVAILABLE

Contemporary Prints is scheduled at Northwest Missouri State University in Maryville, MO from January 7 through February 17, 2002. This exhibit contains seventeen prints co-published since 1988 by Normal Editions Workshop and University Art Galleries. Veda Rives will give a lecture in conjunction with the opening reception on the evening of the 7th.

Other exhibits available from N.E.W. include *Normal Editions Workshop: A Print Retrospective*, documenting all of the major editions published by N.E.W.; *Illinois Artists at Normal Editions Workshop*, featuring forty works by artists from Illinois; and *Normal Editions Workshop: The Intimate Print*, featuring forty prints uniformly mounted on 18" by 24" mat boards under plexiglass. Rental fees, insurance costs, and shipping charges apply. The rental fees may be applied to the purchase of impressions from the editions featured in the exhibitions. The above mentioned exhibits are listed in the ARTSTOUR 2001-2003 program of the Illinois Arts Council. Institutions in Illinois interested in hosting one or more of these exhibits may apply to the Illinois Arts Council for funding. For more information regarding this program, contact the IAC at 1-800-237-6994.

These exhibitions represent N.E.W.'s ongoing commitment to the production of visual images in collaboration with visiting artists and the distribution of these images to promote visual dialogue with a variety of audiences.

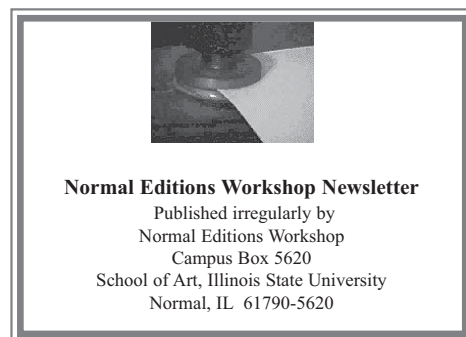
FUNDRAISING FOR NEW PRESSES

The Press Portfolio-A Fundraising Exhibition was hosted in three locations. Gallery III of University Galleries, Illinois State University, Normal, Illinois in 2000; McLean County Arts Center, Bloomington, IL; and BroMenn Regional Medical Center, Bloomington, IL in 2001. The

show, which includes 12 framed works, is available to travel to other venues.

The Press Portfolio is a suite of ten original prints undertaken by ten members of the faculty and staff in the School of Art as a way of supporting the expansion of the Printmaking Areas. The Intaglio and Lithography classrooms will benefit tremendously from a new press in each area. Fifteen of the suites, which are presented in portfolio, are for sale. Each portfolio also includes letterpress title and colophon pages. The first portfolios will be sold at \$1500.00. Subsequent sales will likely reflect price increases. The choices of imagery, media, color, and paper were those of the individual artists. The size of the paper is 15" x 20". The works include a variety of processes including stone and plate lithography, intaglio, collograph, woodcut, handcoloring, and colle. Printmaking students who assisted with the production of this project are Tonia Bonnell, Jacob Feldman, Betsy Hamilton, Yoko Kawazoe, Jeffrey Mitchell, Chris Shepherd, and Cynthia Wang. Donations towards the purchase of the new presses are also appreciated.

Three of the portfolios have already been sold. Together with other potential funding from the University, the Print Area may be able to purchase soon a 4484 Hand Operated Etching Press from Takach Press Corporation in Albuquerque, New Mexico.



Normal Editions Workshop would like to thank Veda Rives for her assistance in preparing this newsletter.

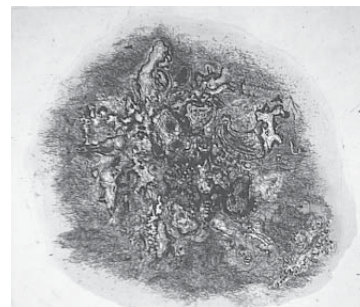
THE PRESS PORTFOLIO



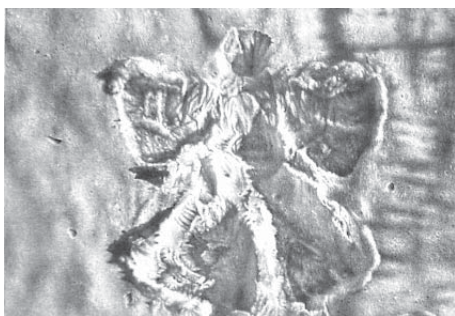
The Real Hero
by Harold Boyd
Woodcut



A Second Opening, III
by Richard Finch
Color Intaglio



Orkney and Its Surrounding Isles
by Shona MacDonald
Intaglio with Hand Coloring



Imprint / Snow Angel
by James D. Butler
Lithograph



Odyssey 2000 by Ray George
Color Intaglio with colle



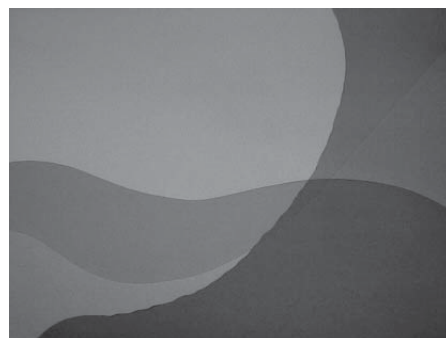
Plans for "Spire" II by Meda R. Rives
Color Lithograph
with colle and hand coloring



Well
by Sean Caulfield
Color Intaglio



Vision of Cortez by Gary Justis
Lithograph with Hand Coloring



Balance by Veda M. Rives
Color Monotype



The Red Ball
by L.J. Douglas
Collagraph with colle



Title Page
Letterpress
by Meda Rives and Veda Rives



Colophon Page
Letterpress
by Meda Rives and Veda Rives

Normal Editions Workshop

Professor Richard Finch, Director

Veda Rives, Associate Director

Center for the Visual Arts, Department of Art

Illinois State University

Campus Box 5620

Normal, IL 61790-5620

PRSR STD
U.S. POSTAGE
PAID
ILLINOIS STATE
UNIVERSITY

Our e-mail addresses are:

rdfinch@ilstu.edu and vrives@ilstu.edu



Meda Rives and Richard Finch proofing a plate at the litho press.

N.E.W. AWARDS

Chad Collofello was awarded the N.E.W. 2001-02 Scholarship. Each spring the School of Art's Scholarship Committee reviews slide portfolios submitted by the art students to select winners for a variety of awards and scholarships. The Normal Editions Workshop Scholarship is open to both graduate and undergraduate art students who have an emphasis in printmaking and will be attending ISU in the following academic year.

N.E.W. again sponsored two awards for printmaking at the 2001 Student Annual Exhibition. **Bradley P. Giacomini** received the "Best Undergraduate Print Award" for his etching, *Manifest Destiny...A Retrospective*, and **Yoko Kawazoe** received the "Best Graduate Print Award" for her etching, *Lost & Found Lost Again III*.

FACULTY CHANGES

A search for an Intaglio Printmaker is being conducted. The School of Art at Illinois State University is seeking an artist/intaglio printmaker to teach undergraduate and graduate courses and to supervise the intaglio program and print shop. Assistant Professor, tenure track position to begin August 15, 2002. Salary competitive. MFA required. Teaching experience

beyond the graduate assistantship level, exhibition record, and knowledge of drawing, computer technology and contemporary issues in art preferred. Initial review of applications will begin January 4, 2002, and continue until position is filled. To assure full consideration, please send SASE, letter of application, vita, statement of teaching philosophy, examples of syllabi and/or class projects, 20 slides or other appropriate documentation of own work, 20 slides of student work, and names, addresses and telephone numbers of three references by January 4, 2002 to: Intaglio Printmaking Search Committee, School

of Art, Illinois State University, Campus Box 5620, Normal, Illinois 61790-5620. Illinois State University is an Affirmative Action/Equal Opportunity Employer, encouraging diversity.

MFA DEGREE APPLICATIONS

Master of Fine Arts Degree applications in Printmaking for Fall 2002 are being accepted. Information about and applications for the degree program are available from the School of Art. Contact Richard Finch or Jim Butler by phone at 309-438-7530 or e-mail jdbutle@ilstu.edu for details. Completed applications should be in by Feb. 1.

THE 17TH ANNUAL PRINTMAKER'S EXHIBITION AND SALE

ILLINOIS STATE UNIVERSITY CENTER FOR THE
VISUAL ARTS **CVA Rooms 127 & 129**
FRIDAY, DECEMBER 7TH 8A.M.-7P.M.

See related article inside for more details on this unique opportunity.