



NORMAL EDITIONS WORKSHOP

Richard Finch, Director and Professor of Art
Veda Rives, Associate Director

Center for the Visual Arts Box 5620, Illinois State University Normal, IL 61790-5620

PHONE: 309-438-7530

FAX: 309-438-5625

WEB: <http://www.orat.ilstu.edu/~rfinch/>

EMAIL: rdfinch@ilstu.edu & vrives@ilstu.edu

FALL 2003

NUMBER 12

2003 PUBLICATIONS

Phyllis Bramson, a painter from Chicago, completed a one-week visiting artist residency at Normal Editions Workshop in March 2003. This program was partially sponsored by a grant from the Illinois Arts Council (IAC), an agency of the State of Illinois. Ms. Bramson collaborated with the N.E.W. staff during her stay to produce color trial proof (C.T.P.) impressions of two multi-colored lithographs. Hand drawing by the artist, Xerox toner washes on grained mylar, and photographic techniques were utilized in creating the images. The color trial proofs were handprinted by Richard Finch and Veda Rives with assistance from Nathan Bailey, John Disco, Tanisha Redict, Meda Rives, and Chris Shepherd. The 30 x 22 inch images were printed on white BFK Rives paper. We take this opportunity to express our appreciation to the IAC for the support of this project: Phyllis Bramson at Normal Editions Workshop, Illinois State University.

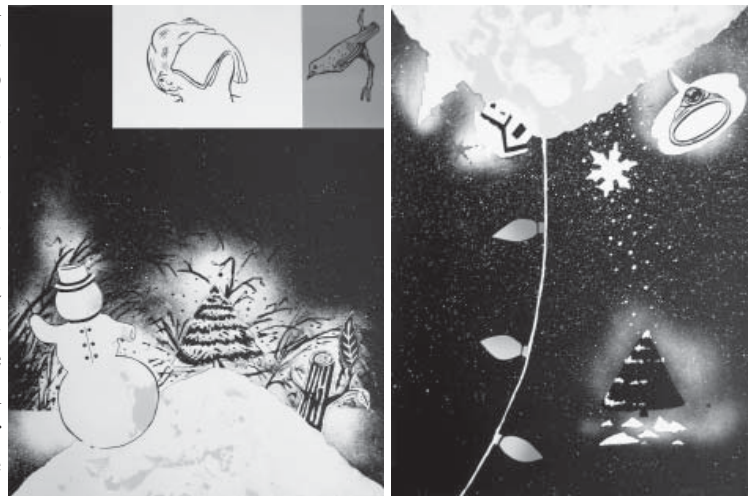
An edition of prints for John Himmelfarb was recently completed. Chapeau is a six color lithograph handprinted by Veda Rives and Richard Finch with

assistance from Chad Colloff, Yoko Kawazoe, Meda Rives, Chris Shepherd, Nathan Bailey, John Disco, and Tanisha Redict. The 22 x 30 inch image was printed on Arches Cover Buff paper. The retail price is \$900.00. John

Himmelfarb, a well known painter from Chicago, completed a visiting artist residency at Normal Editions Workshop in February 2002. This program was partially sponsored by a grant from the Illinois Arts Council.

GRANT AWARD FISCAL YEAR 2004

We are very pleased to report that the Illinois Arts Council has awarded a grant supporting *John Fraser at Normal Editions Workshop*, Illinois State University. **John Fraser** is an established artist who lives and works

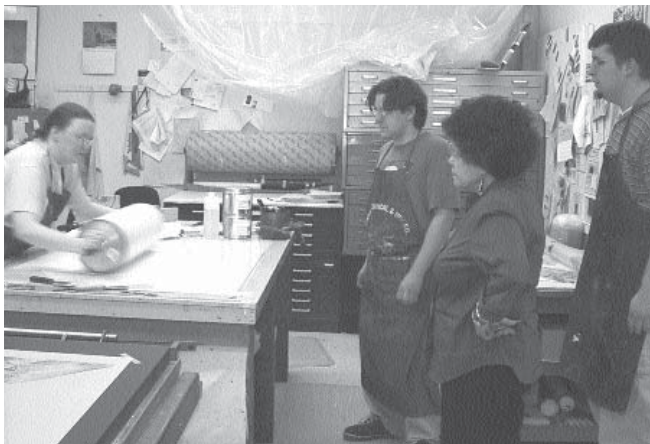


Object Lesson #1 and Object Lesson #2 by Phyllis Bramson

Midwest/NEA Regional Visual Arts Fellowship 1992.

John Fraser's work has been exhibited nationally and internationally. A brief list of recent solo shows includes: *Structure & Surface*, Roy Boyd Gallery, Chicago, IL; *Scott White Contemporary Art*, La Jolla, CA; *Collages, 1995-2000*, University Club, Chicago, IL; *John Fraser: Recent Works*, Western Illinois University, Macomb, IL. Selected group shows include *Retrospective/Prospective*, Anne Reed Gallery, Ketchum, ID; *Art a Century Apart: 1903 & 2003*, Mississippi Museum of Art, Jackson, MS; *Underfoot*, Dan Galeria, Sao Paulo, Brazil; *16 Chicago Artists*, Szinhaz Galeria, Zalaegerszeg, Hungary.

A concise description of Mr. Fraser's work comes from the exhibition summary in connection with his solo show at WIU. "John Fraser brings together light, space, and otherwise ordinary materials to produce meditative works of extreme elegance. He is widely recognized for blending Eastern and Western sensibilities in a way that reflects contemporary concerns. His



Phyllis Bramson, Visiting Artist, at N.E.W. (left to right) Veda Rives, Associate Director; John Disco, Student Intern; Phyllis Bramson, & Nathan Bailey, Student Intern prepare a color ink for printing the color trial proof.

in St. Charles, Illinois. His MFA degree is from Northern Illinois University in Dekalb and his BA degree is from Roosevelt University in Chicago. Awards include: Illinois Arts Council Artist Fellowship 2002 and 1990, Illinois Arts Council Artist Finalist 2000, Illinois Arts Council Special Assistance Grant 1997 and 1994, and Arts

involvement crosses over various categories of painting, drawing, and sculpture, as well as work of a site-based nature." (www.wiu.edu/art/gallery/exh01/fraser.htm)

Mr. Fraser's short term visiting artist residency at Normal Editions Workshop will be in late February, 2004. Activities will include a public lecture to community and campus members regarding his work, artistic insights, current endeavors, and recent achievements. The lecture is scheduled for Thursday, February 26th at 3:30 p.m. in CVA room 149. In addition, public presentations will be ongoing, with demonstrations of his working methods as he explores the challenging, expressive, and creative potentials of printmaking in collaboration with the professional staff at N.E.W. to produce a limited edition print.

For more information about John Fraser's artwork, see the gallery website at <http://www.royboyd.com>

PRINTMAKERS EXHIBITION AND SALE

The 19th Annual Printmaker's Exhibition and Sale will be held on Friday, December 5th from 8 am-6 pm in the Intaglio studio room 123 in the Center for the Visual Arts (CVA) building. All prints are original artworks by ISU students, faculty, staff, and visiting artists. CVA is located on the south side of campus on Beaufort Street. Hourly parking is available in the south University structure on University Street. Please do not park in any reserved spaces.

A silent auction of the framed lithograph *Magenta Series F.B.* by Rosalyn



Collaboration at N.E.W.:
Phyllis Bramson drawing on a mylar

Schwartz will be conducted. The 22 1/4 x 31 1/2 inch image is a five color lithograph printed on Rives BFK white paper. The minimum bid for this framed impression at the silent auction is \$400.00. (The retail price of an unframed impression is \$800.00.) Written bids may be submitted anytime before the sale to: Richard Finch, Campus Box 5620, Illinois State University, Normal, IL 61790-5620. During the sale, written bids may be submitted to the cashier. E-mail bids are accepted via the following address: rdfinch@ilstu.edu. All bids must be received by 6 p.m. on Friday, December 5th.

Impression number 11/25 of the print *Pastiche X* by Ray George will be raffled. The 12 x 9 1/2 inch image is a one color lithograph printed in black-brown ink on Arches Cover buff paper. The retail price of this print is \$100.00. Raffle tickets are only \$1.00 each and are available in CVA Rooms 129A (N.E.W.). All proceeds will be used to support the ISU printmaking program. Both winners will be announced at the end of the sale on December 5th at 6 p.m. Participants



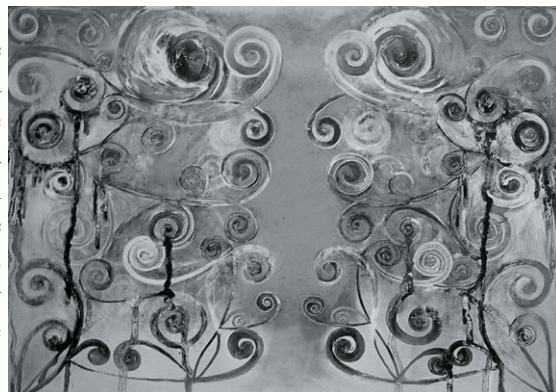
Pastiche X by Ray George

need not be present to win.

PERSONNEL NEWS

Congratulations to Veda Rives, Associate Director of Normal Editions Workshop. Effective October 1, 2003, the associate director's assignment has been expanded to a 75% position. The increase in hours has been eagerly anticipated by the staff at N.E.W. and we look forward to the impact this change will make for the better in meeting the needs of the Workshop.

Congratulations to Richard Finch, Professor of Art and Director of Normal Editions Workshop. This year marks



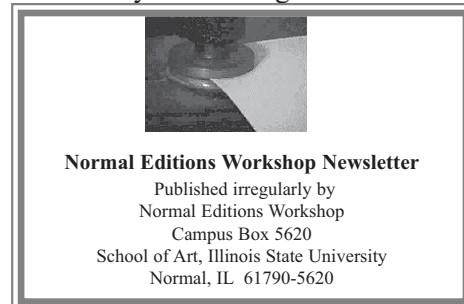
Magenta Series F.B. by Rosalyn Schwartz

his 25th year of service to Illinois State University and the Workshop.

Welcome to our three new graduate students, Shawn Ballarin, Brandon Gunn and Tara Welch who began the MFA program in Printmaking this semester. They represent a diverse background and join Steven Wirth who began the MFA program in January. Their BFA degrees are from the following institutions: Shawn Ballarin, University of Nebraska in Lincoln; Brandon Gunn, Brigham Young University in Utah; Tara Welch, University of Dallas in Texas; and Steven Wirth, West Virginia University in Morgantown. We appreciate the assistance of Brandon Gunn and Tara Welch whose Graduate Assistant assignments are at Normal Editions Workshop this semester.

REPORT ON 2002 PRINTSALE

Highlights from the 18th Annual Printmaker's Exhibition and Sale which was held on December 6, 2002 include a high volume of sales of prints (many by students new to this venue) and a successful raffle of the one-color lithograph *Single Flower Vase* by James D. Butler. The winner of the raffle was Catherine Dertz. Cynthia Wang submitted the



Normal Editions Workshop would like to thank Veda Rives and Meda Rives for their assistance in preparing this newsletter.

winning bid for the silent auction piece Magenta Series by Rosalyn Schwartz. The Printsale was well attended by both campus and community members, and the Printmaking Area would like to express appreciation to all who helped to make it a success.

CONTRACT PROJECTS

Wonsook Kim, an established artist who lives and works in New York,



Rain by Wonsook Kim

is collaborating with N.E.W. on five intaglio plates. Ms. Kim, who graduated from Illinois State University with an MFA in 1978, has five copper plates under way at this time. The plates are cut in mountain and house shapes and the images are created with sugar lift and aquatint techniques. The images are in various stages of completion at this time.

PRINT EXHIBITIONS AVAILABLE

The Contemporary Art Center in



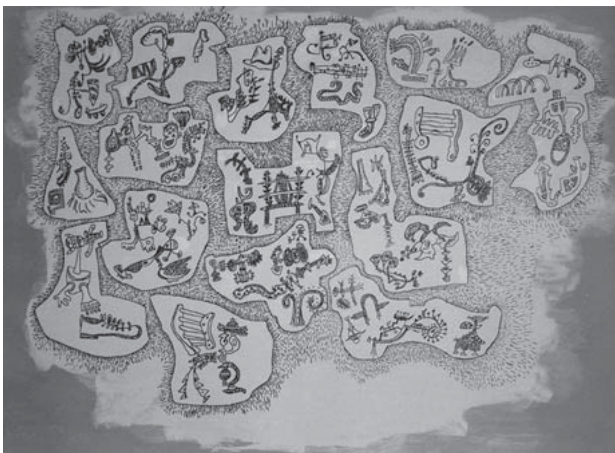
Carrying a Tree by Wonsook Kim

Peoria, IL hosted the traveling exhibition, Selected Prints from Normal Editions Workshop from February 28th through April 25, 2003. This exhibit highlighted twenty-two framed prints published by Normal Editions Workshop. The exhibit included works by James Butler, Rodney Carswell,

Micheal Dubina, Alex Grey, Arturo Herrera, Mark Innerst, Richard Rezac, Rosalyn Schwartz, and David Wojnarowicz. The Perkinson Gallery, Millikin University, Decatur, IL, hosted Contemporary Prints, in 2002. This exhibit featured selected works from the N.E.W. archives.

Selected original limited edition prints from the N.E.W. archives have been organized into four traveling exhibitions. Illinois Artists at Normal Editions Workshop, featuring 50 limited edition prints by artists from Illinois; Normal Editions Workshop: Contemporary Prints, featuring 18 works by a variety of artists, co-published with the University Galleries, Normal Editions Workshop: The Intimate Print, featuring forty prints uniformly mounted on 18" by 24" mat boards under plexiglass, and Normal Editions Workshop-A Retrospective, featuring 75 limited edition prints by a variety of artists. The works show great diversity in the subject matter, stylistic approaches and printmaking media utilized in the production of the pieces. All or portions of these exhibits may be used by the host institution. Rental fees, insurance costs, and shipping charges apply. The rental fees may be applied to the purchase of impressions from the editions featured in the exhibitions. The above mentioned exhibits are listed in the ARTSTOUR 2001-2003 program of the Illinois Arts Council. Institutions

in Illinois interested in hosting one or more of these exhibits may apply to the Illinois Arts Council for funding. For more information regarding this program, contact the IAC at 1-800-237-6994. For an on-line



Chapeau by John Himmelfarb

preview, see the Traveling Exhibition webpage at <http://www.orat.ilstu.edu/~rfinch/newex.html>

These exhibitions represent N.E.W.'s ongoing commitment to the production of visual images in collaboration with visiting artists and the distribution of these images to promote visual dialogue with a variety of audiences.

RECENT GRADUATIONS

Several of our student interns and graduate assistants have recently completed their degree programs at Illinois State University. N.E.W. would like to recognize the accomplishments of these students who have contributed to the success of the Workshop by their many hours devoted to our projects. Nathan Bailey, BFA; John Disco, BFA; and Tanisha Redict, BA; graduated from the School of Art in May 2003. Yoko Kawazoe, MFA; Pamela Wenger, BFA; and Colin Nesbit, BFA; will be graduating in December 2003. Congratulations all, we wish each of you much continued success in your future careers.



March 2003: Phyllis Bramson and Richard Finch review proofs.

Normal Editions Workshop

Professor Richard Finch, Director

Veda Rives, Associate Director

Center for the Visual Arts, School of Art
Illinois State University
Campus Box 5620
Normal, IL 61790-5620

PRSR STD
U.S. POSTAGE
PAID
ILLINOIS STATE
UNIVERSITY

Our e-mail addresses are:

rdfinch@ilstu.edu and vrives@ilstu.edu



Meda Rives and Richard Finch proofing a plate at the litho press.

N.E.W. AWARDS

Colin Nesbit is the 2003-2004 Normal Editions Workshop Scholarship award winner. Colin is an undergraduate in the BFA program. Each spring the School of Art's Scholarship Committee reviews slide portfolios submitted by the art students to select winners for a variety of awards and scholarships. The Normal Editions Workshop Scholarship selection is based on outstanding artistic ability

and performance in printmaking and is open to both graduate and undergraduate art students who have an emphasis in printmaking and will be attending Illinois State University in the following academic year.

N.E.W. also sponsors awards for printmaking at the annual student juried exhibitions. At the 2003 Student Annual Exhibition, held in the spring semester, the "Best Undergraduate Print Award" went to Nathan Bailey.

MFA DEGREE APPLICATIONS

The School of Art offers Master of Fine Arts Degrees in the following areas of study: Printmaking, Drawing, Painting, Photography, Sculpture, Glass, Ceramics, Metals/Jewelry, and Video. Information about and applications for the MFA degree program are available online at <http://www.orat.ilstu.edu/art/>

Questions maybe directed to the School of Art office (309-438-5621) or sent via email to gradart@ilstu.edu

THE 19TH ANNUAL PRINTMAKER'S EXHIBITION AND SALE

ILLINOIS STATE UNIVERSITY CENTER FOR THE VISUAL ARTS

CVA ROOM 123

FRIDAY, DECEMBER 5TH 8 A.M.-6 P.M.

See related article inside for more details on this unique opportunity.