

The 23rd Annual PRINTMAKERS' EXHIBITION AND SALE

Illinois State University Center for the Visual Arts

CVA Room 123 Friday, December 7th, 8 a.m. - 5:30 p.m.

Hourly parking is available in the South University Garage on University Street.

* ALL SALE ITEMS ARE ORIGINAL ARTWORKS BY ILLINOIS STATE UNIVERSITY STUDENTS, FACULTY, AND STAFF.

Hundreds of prints on display. Most prices range from \$2.00 to \$50.00.

Selected impressions from Normal Editions Workshop will also be on display.

* Winners of the SILENT AUCTION and RAFFLE EVENTS will be announced at 5:00 p.m.

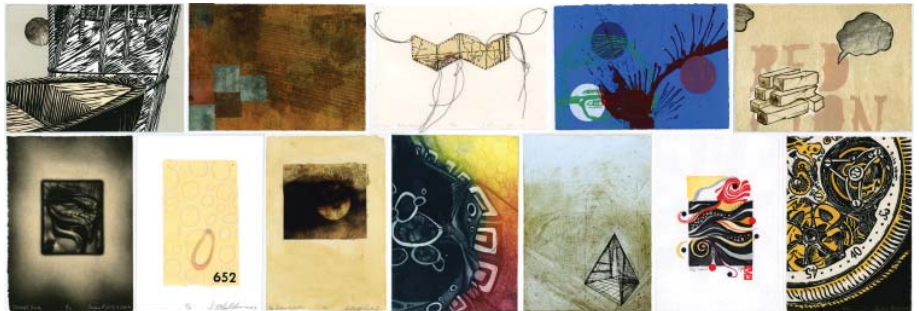
Don't miss two very special opportunities to acquire valuable prints by nationally recognized artists!

Two Silent Auctions!

Written bids may be submitted before and during the sale to Richard Finch, James Butler, Sarah Smelser, or Veda Rives; via U.S. mail; e-mail: normalEditionsWorkshop@ilstu.edu; or in person.



Two Birds and a Bad Dive by
Wayne Kimball
impression # 31/60
ten-run lithograph, 11" x 15"
copyright 2007, **framed**
MINIMUM BID: \$250.00
Retail price: \$350.00 (unframed)



selected impressions from the

Timeline exchange portfolio

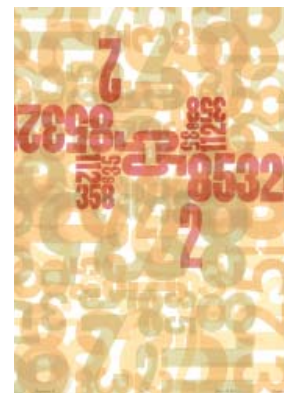
Forty-nine prints by artists who attended the *Frontiers in Printmaking* conference at Illinois State University this fall. This unique portfolio features the works of both nationally known and emerging artists. Each print measures 7" x 5". The theme of "timeline" connects the prints, which show diversity in subject matter, stylistic approaches, and printmaking media. Only one other complete set of this portfolio exists in the Normal Editions Workshop archive.

MINIMUM BID: \$150.00

Raffle tickets are only \$1.00 !

Progression II by Veda Rives
multi-color letterpress,
20" x 14", copyright 2007

Retail price of unframed print: \$100.00
matted with archival museum board
RAFFLE TICKETS ARE \$1.00 EACH



All proceeds from the raffle and silent auctions will go to support the ISU Printmaking program. Please show your support for the ISU Printmaking area and students by your attendance at the sale and exhibition. We look forward to seeing you at this special event.

More information: http://www.cfa.ilstu.edu/normal_editions/

Information about sales in other media areas is available at the Art office, phone 438-5621.

Illinois State University
Normal Editions Workshop

Professor Richard Finch, Director

Veda Rives, Associate Director

Center for the Visual Arts, School of Art

Campus Box 5620

Normal, IL 61790-5620

E-mail: normaleditionsworkshop@ilstu.edu



PRSRST STD
U.S. POSTAGE PAID
ILLINOIS STATE
UNIVERSITY

Printmakers' Sale and Exhibition is in the Center for the Visual Arts building (CVA) Room 123.

CVA is on the south side of campus on Beaufort Street.

Hourly parking is available in the South University Structure on University Street.

Please do not park in any reserved spaces.

If you have any questions, Phone: (309) 438-7530 or

e-mail: normaleditionsworkshop@ilstu.edu

