

26TH PRINTMAKERS' ANNUAL EXHIBITION AND SALE

**Illinois State University Center for the Visual Arts Room 127
Friday December 10th • 8a.m. - 5:00p.m.**

ALL SALE ITEMS ARE ORIGINAL ARTWORKS BY ILLINOIS STATE UNIVERSITY STUDENTS, FACULTY, STAFF AND VISITING ARTISTS.

Hundreds of prints will be on display. Most prices range from \$2.00 to \$50.00 payable by cash, check or credit card.

100% of proceeds from selected works will go to the **Printmaking Student Travel Fund** to support student participation in national conferences.



Two Birds and a Bad Dive by **Wayne Kimball**
ten-run lithograph, 11" x 15"
© 2007, min. bid \$150.00 framed
retail price: \$350.00 unframed



*Coming Home** by **Sarah Smelser**
woodcut and monotype, 10" x 15"
© 2010, min. bid \$300.00 framed
retail price: \$600.00 unframed
* Designated for Printmaking Student Travel Fund



A Single Flower Vase by **James D. Butler**
one-color lithograph, 14 5/8" x 19 3/8"
© 1985, min. bid \$75.00 framed
retail price: \$100.00 unframed

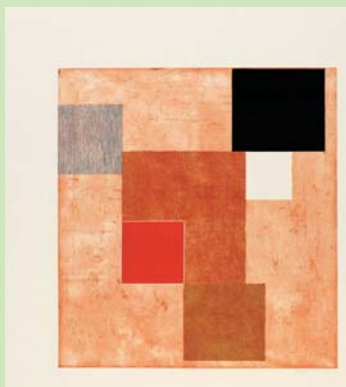
5 SILENT AUCTIONS!

Written bids may be submitted before and during the sale to Richard Finch or Veda Rives; via U.S. mail, e-mail: normaleditionsworkshop@ilstu.edu; or in person. All bids must be submitted by 4:30 p.m on December 10th.

Winners of the SILENT AUCTIONS will be announced at 5:00 p.m.

Winners need not be present to win.

Don't miss this opportunity to acquire valuable prints by nationally recognized artists!



untitled by **Rodney Carswell**
five-color intaglio and woodcut with chine collé
24 3/4" x 22 1/4"
© 2001, min. bid \$200.00 framed
retail price: \$400.00 unframed



GroundCover-Winter by **Julia Fish**
two-color lithograph, 21" x 17 1/2"
© 1997, min. bid \$350.00 framed
retail price: \$700.00 unframed



All proceeds from this event will go to support the ISU Printmaking program/ NEW foundation.

More information: http://www.cfa.ilstu.edu/normal_editions/

Illinois State University, College of Fine Arts, School of Art

Normal Editions Workshop
 Professor Richard Finch, Director
 Veda Rives, Associate Director
 Center for the Visual Arts, School of Art
 Illinois State University
 Campus Box 5620
 Normal, IL 61790-5620

PRSRT STD
 U.S. POSTAGE PAID
 ILLINOIS STATE
 UNIVERSITY

Printmakers' Exhibition and Sale is in the Center For Visual Arts Building (CVA) Room 127.

CVA is on the south side of campus on Beaufort St.
 Hourly parking is available in the South University Structure on University Street. Please do not park in reserved spaces.
 If you have any questions, phone (309) 438-7530
 e-mail: normalEditionsWorkshop@ilstu.edu

